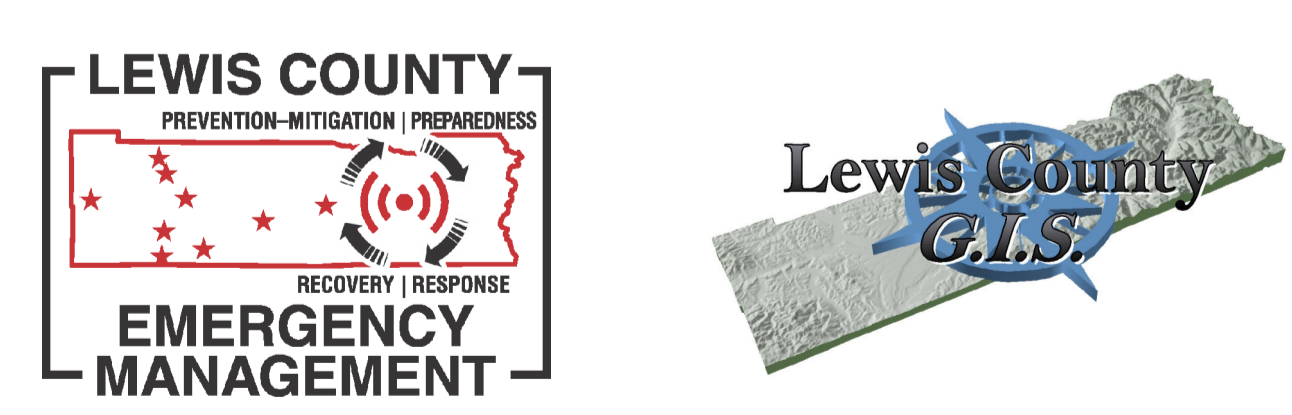
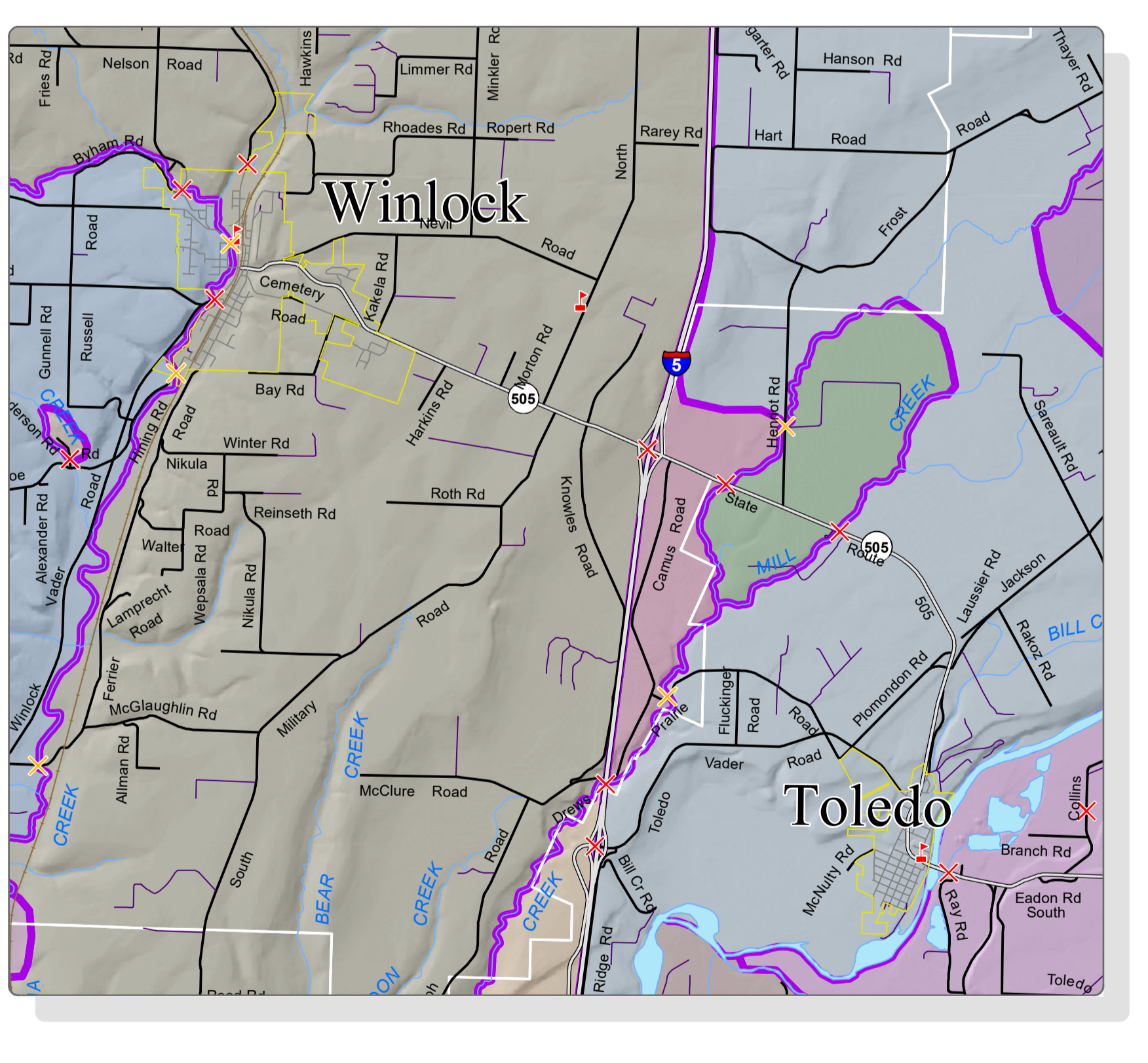
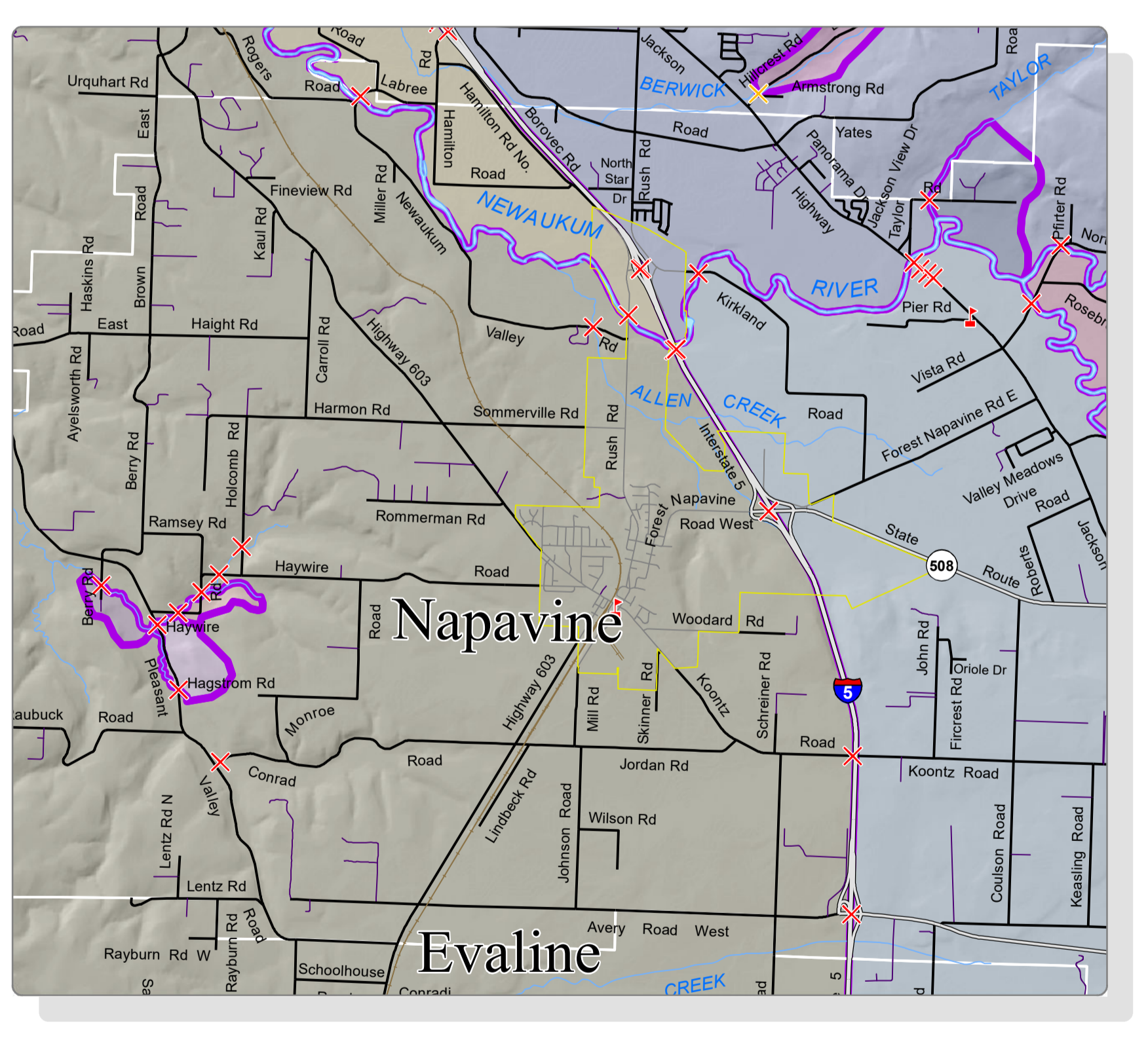
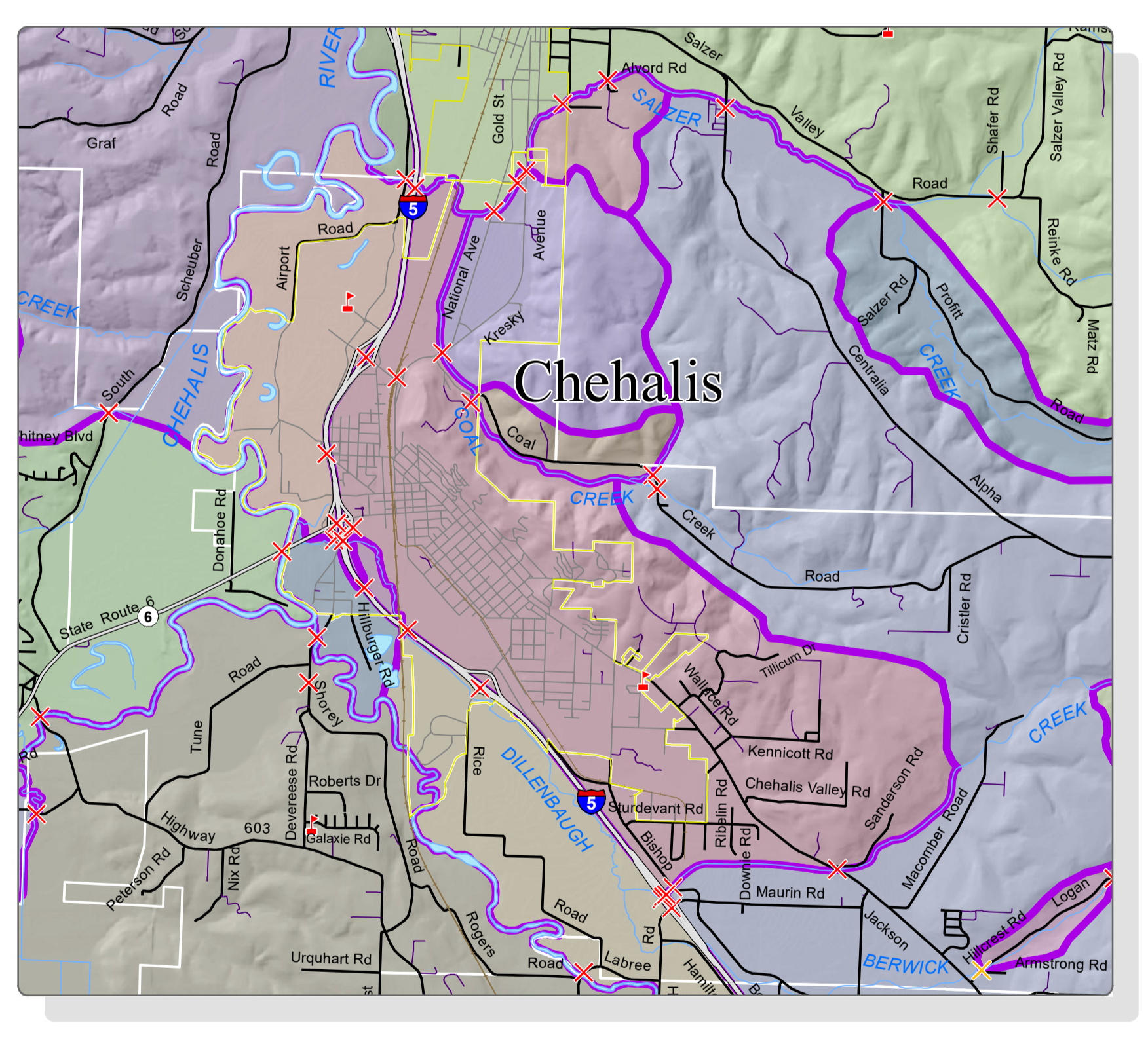
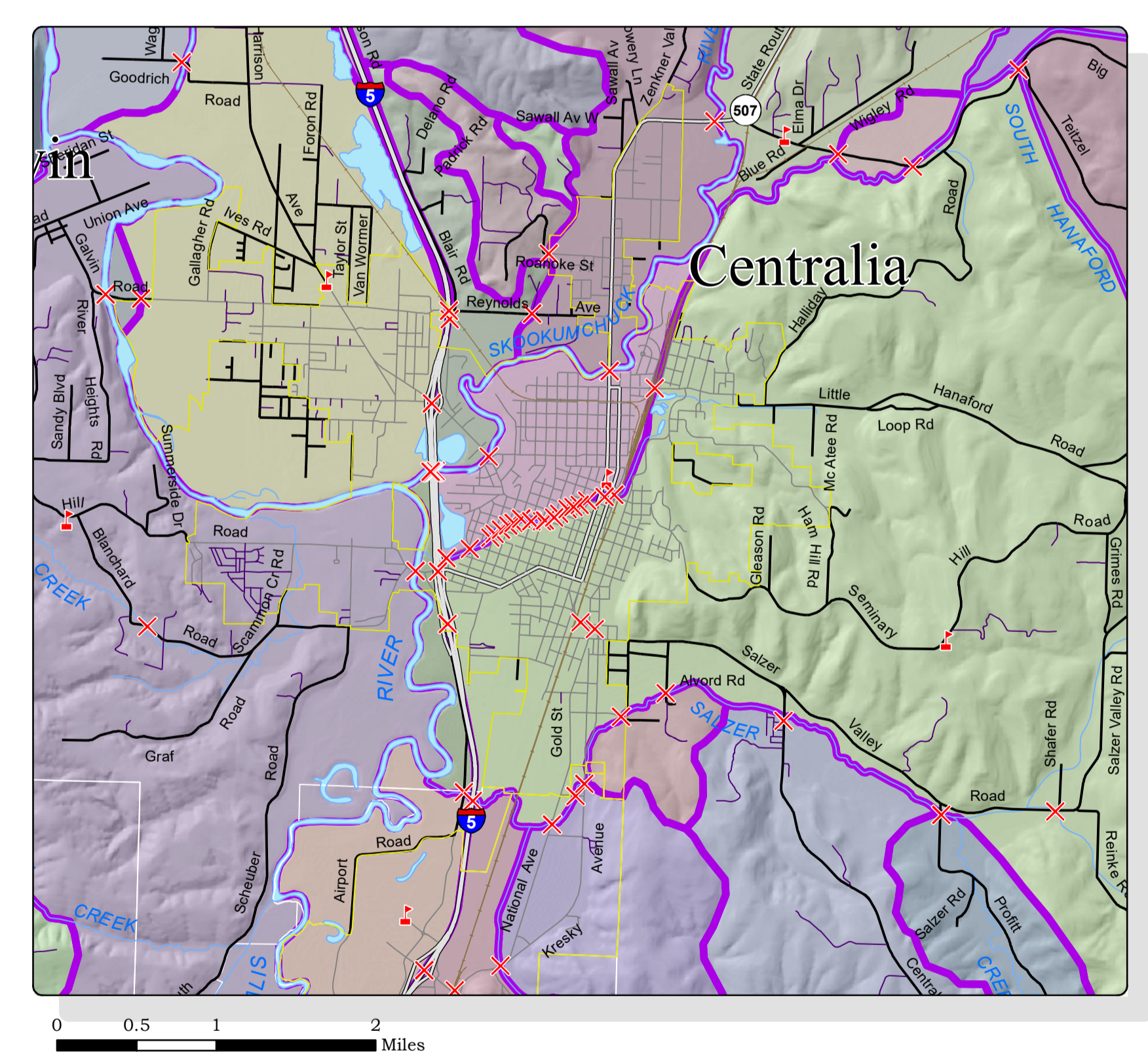
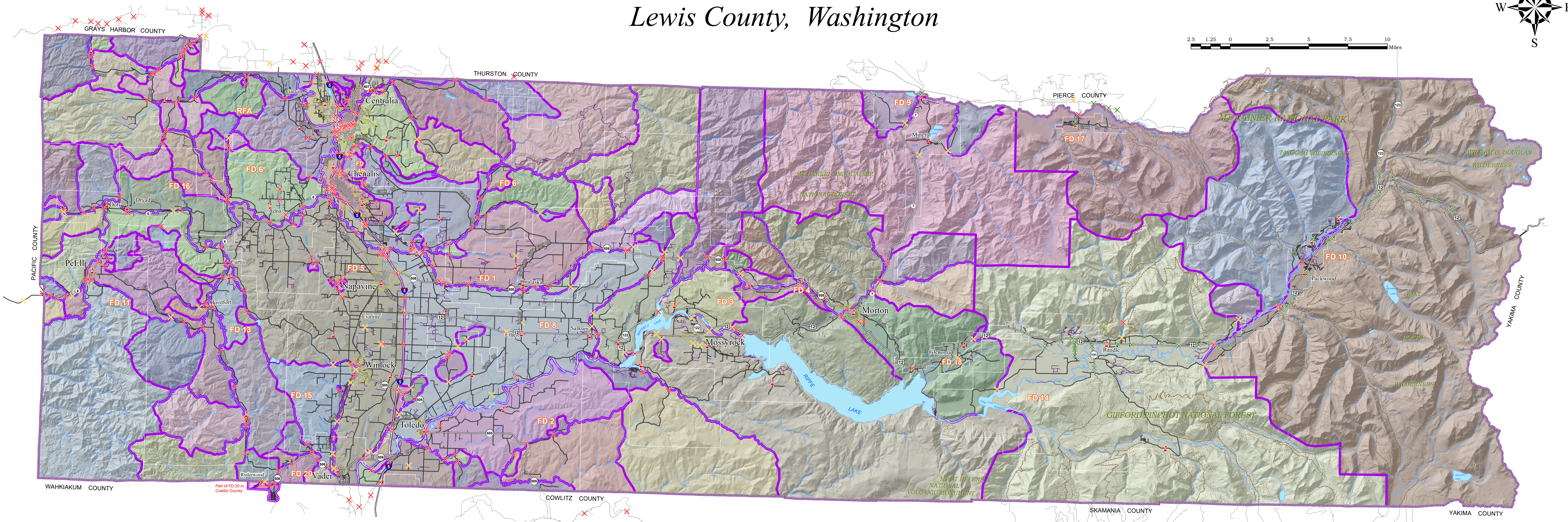


# Lewis County, Washington



This map was created by Lewis County Geographic Information Systems. The accuracy of the map has not been verified, and should be used for informational purposes only. Any possible discrepancies should be brought to the attention of Lewis County Geographic Information Services.

Projection: Lambert Conformal Conic  
 Datum: 1983 North American Datum  
 Coordinate System: Washington State Plane South Zone

## Earthquake Isolation Areas

Based on WSDOT Bridge Damage Analysis of Theoretical Cascadia Subduction Zone EQ (Magnitude 9.0)

**Legend**

- RRAP Bridge Damage
  - × Significant
  - × Moderate
  - × Minor
- EQ Isolation Areas
- Fire Districts (white lines)
- City Limits
- Fire Station
- State Route
- County Road
- City Street
- Private Road
- USFS Major Road
- USFS Minor Road

Estimated bridge damages from a 9.0 Cascadia Subduction Zone earthquake were developed by WSDOT and WAEMD for the 2019 Regional Resiliency Assessment Program (RRAP) using the custom Bridge Seismic Screening Tool (BSST).  
 Significant = longer than 2 weeks to reopen.  
 Moderate = about 2 weeks to reopen.  
 Minor = less than a couple days to reopen.