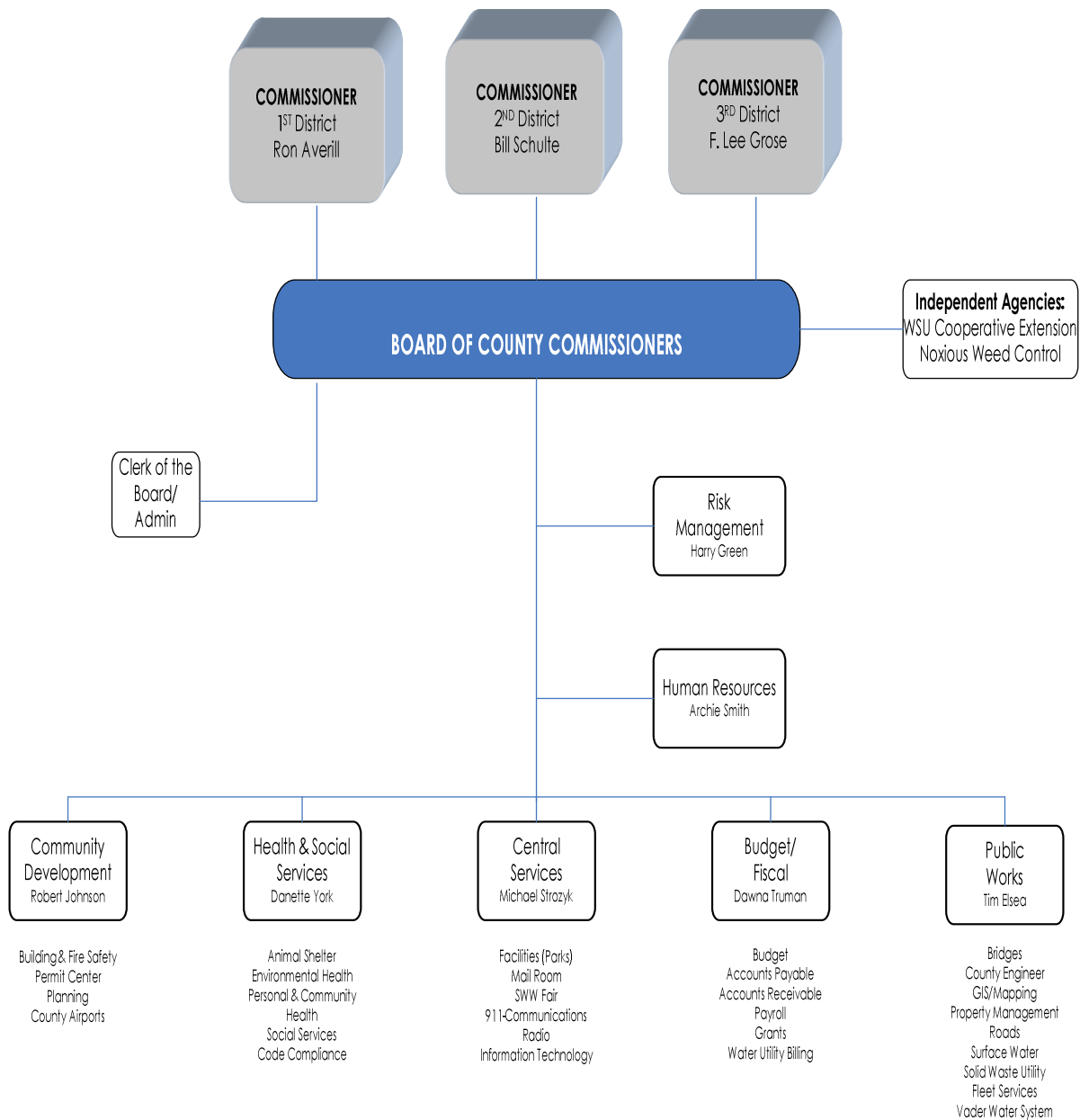
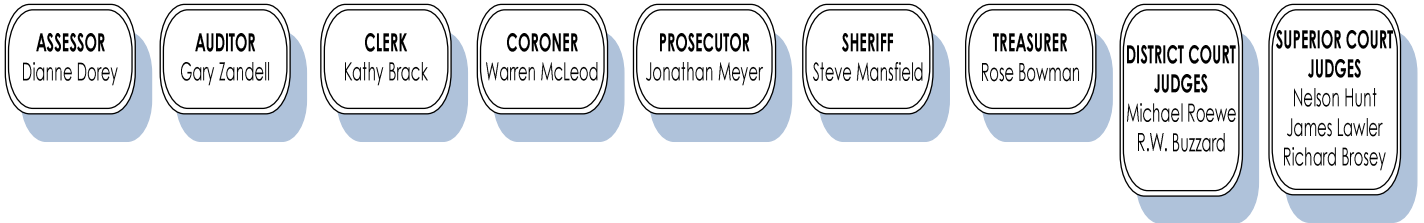


2011 Lewis County Organizational Chart



Guide to Lewis County Government

Who We Are and How We Work

RON AVERILL, Commissioner

(360) 740-1120

BILL SCHULTE, Commissioner

(360) 740-1120

F. LEE GROSE, Commissioner

(360) 740-1120

The Board of County Commissioners is the general legislative authority for the county and, as such, approves the annual appropriations for all county functions. The board also has quasi-judicial duties as the appeals body for some actions relating to the regulations of property division and land development.

DIANNE DOREY, Assessor

(360) 740-1111

The County Assessor is responsible for the administration of State Laws relating to assessment of real and personal property. The Assessor determines fair market value of taxable property. The Assessor's records pertaining to property ownership, value, legal descriptions and mapping are made available to the public.

GARY ZANDELL, Auditor

(360) 740-1156

The Auditor is responsible for examining all county financial transactions to ensure adequate coverage and proper reporting of expenditures for county funds. The Auditor acts as county recorder and issues marriage licenses. The Auditor is also responsible for the licensing of motor vehicles in the county as well as conducting all general and special elections while serving as the registrar of voters for the county.

KATHY BRACK, Clerk

(360) 740-1287

The County Clerk is the record management administrator and Financial Officer of the Superior Court for the county. The Clerk also acts as a quasi-judicial officer for the issuance of various documents, draws and maintains jury panels and collects statutory fees for litigations and fines.

WARREN MCLEOD, Coroner

(360) 740-1376

The Coroner is responsible for providing autopsy services and lab and toxicology services for all necessary cases. The Coroner determines the cause of death, processes and signs the death certificate, responds to the scene of deaths within the county, conducts investigations, protects the decedent's property, locates the next of kin, and cooperates with public officials and law enforcement agencies.

MICHAEL ROEWE, Judge, District Court

(360) 740-1200

R.W. BUZZARD, Judge, District Court

(360) 740-1200

The District Court is the lower level of the trial court system. District Court judges decide civil damage cases where the amount at issue is no more than \$75,000 and criminal cases where the maximum term of imprisonment is no more than one year. This Court also handles civil and traffic infraction cases, and provides a forum for resolution of legal matters such as anti-harassment orders, name changes, and small claims, in which citizens often represent themselves.

JONATHAN MEYER, Prosecuting Attorney

(360) 740-1423

The Prosecuting Attorney prosecutes all criminal matters for Lewis County and serves as legal advisor to the county departments and officials. The Prosecutor reviews all county legal documents. The office administers the crime victim/witness assistance programs and provides support enforcement services for the state and receives state and federal reimbursement.

STEVE MANSFIELD, Sheriff**(360) 740-1300**

The Sheriff's Office is responsible for law enforcement, crime prevention, confinement of prisoners, the serving of civil and legal processes and emergency operations. The department is also responsible for traffic control on county roads, safe operations of watercraft on inland waters, and search and rescue.

NELSON HUNT, Judge, Superior Court**(360) 740-1333****JAMES LAWLER, Judge, Superior Court****(360) 740-1333****RICHARD BROSEY, Judge, Superior Court****(360) 740-1333**

Superior Courts are the highest level trial courts. They are empowered to hear civil and felony criminal cases. The Superior Court has all administrative responsibilities for the Juvenile Court and Drug Court.

ROSE BOWMAN, Treasurer**(360) 740-1115**

The County Treasurer is custodian of all county money and investments. The Treasurer also serves as exofficio Treasurer and Chief Investment Officer for 64 other taxing and assessment districts and governmental entities. The Treasurer is responsible for collection and distribution of taxes and other revenues for each of the entities for which they act as Treasurer. The Treasurer manages cash flow and is responsible for managing debt service.

ROBERT JOHNSON, Community Development Director**(360) 740-1232**

The Community Development Department manages the building permit process, provides for field inspection of construction and fire related inspection, and activities related to planning. The Department is also responsible for the operation of the Packwood and South County Airports.

DANETTE YORK, Health & Social Services Director**(360) 740-1148**

The Health and Social Services Department provides the administration for Public Health, the Animal Shelter, Veterans Relief, Social Services and Code Compliance.

MICHAEL STROZYK, Central Services Director**(360) 740-1464**

Central Services provides cost effective equipment and customer services. The Department is responsible for the operation of the Facilities division, the Southwest Washington Fair, and the Information Technology division. The department also operates the Communications and Radio divisions which support county emergency fire and police needs for which other entities can contract for services.

DAWNA TRUMAN, Budget/Fiscal Services Director**(360) 740-1209**

Budget/Fiscal Services is responsible for the development and implementation of the County budget. This department also provides fiscal services to all county departments under the BOCC including utility billing.

TIM ELSEA, Public Works Director**(360) 740-2660**

The Public Works Department is responsible for the County Road fund including physical environment, road maintenance, road construction and administration. This department is also responsible for the operation of the Solid Waste, water utility and Fleet Services divisions.

HARRY GREEN, Risk Manager**(360) 740-1446**

The Risk Management department is responsible for the administration of the county's risk management program and its various insurance programs.

ARCHIE SMITH, Human Resources Administrator

(360) 740-2747

The Human Resources department performs two centralized functions on behalf of the Board of County Commissioners (contract negotiations and oversight of the classification and compensation system) and basic HR assistance to all county offices and departments. The office also provides consultative services to departments on all HR issues.

SHEILA GRAY, WSU Director, WSU Lewis County Extension

(360) 740-1212

The WSU Lewis County Extension department engages people, organizations and communities by providing outreach education programming in the subject areas of horticulture, forestry, family living, 4-H youth development, community resources, agriculture and utilizing professional staff from Washington State University and WSU Extension certified volunteers, such as Master Gardeners, master food preserver & safety advisors and 4-H leaders.

BILL WAMSLEY, Program Coordinator, Weed Control

(360) 740-1215

The Noxious Weed Control department provides information and assistance for control and eradication of noxious weeds in Lewis County.