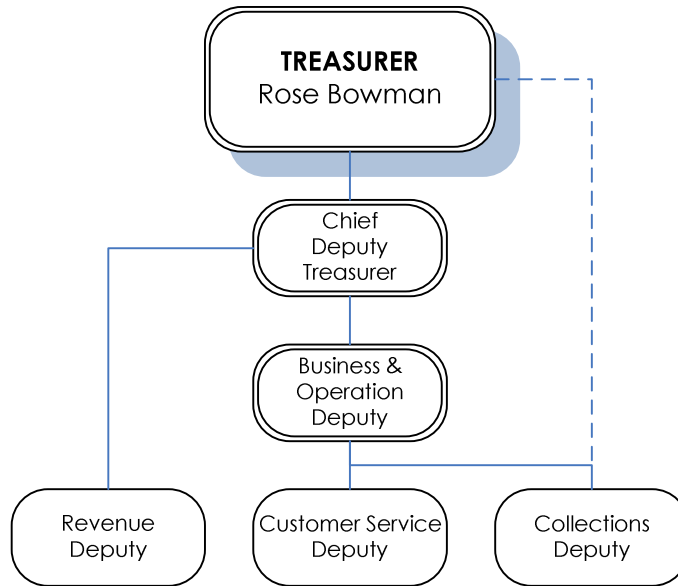


Treasurer

General Fund, Dept. No. 106

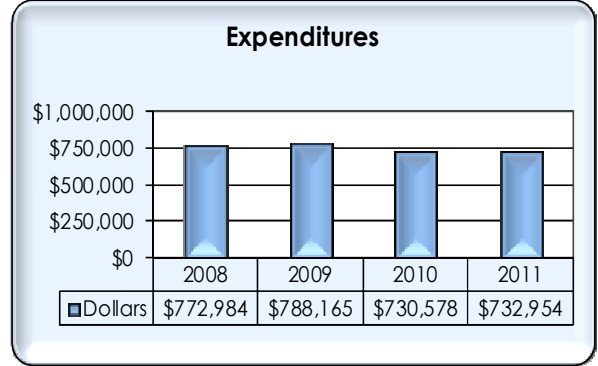
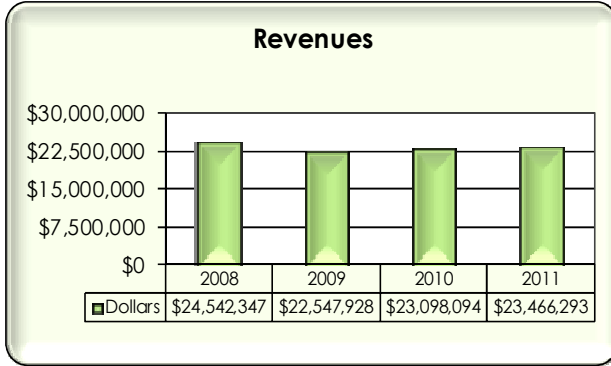


The County Treasurer is custodian of all County money and investments. The Treasurer also serves as Ex-Officio Treasurer and Chief Investment Officer for 64 other taxing and assessment districts and governmental entities such as school districts, fire districts, cemetery districts and hospital districts.

The Treasurer is responsible for collection, reporting and distribution of taxes and other revenues for each of the entities for which she acts as Treasurer. In this capacity she disburses their monies to redeem warrants issued by the County Auditor and/or the taxing district. The Treasurer manages cash flow, debt service, and the investment of surplus moneys present in any of the funds. The Treasurer is also responsible for banking contracts and relationships for the County.

Staffing Summary

	2008 FTE	2009 FTE	2010 FTE	2011 FTE
Treasurer	1	1	1	1
Chief Deputy Treasurer	1	1	1	1
Deputy Treasurer-Business & Operations	1	1	1	1
Revenue Deputy	2	0	0	0
Accountant	0	1	1	1
Accounting Specialist	0	1	1	1
Deputy Treasurer-Customer Service	3	3	3	3
TOTAL	8	8	8	8



REVENUES

BARS #	GENERAL Description	2008 Actual	2009 Actual	2010 Est. Actual	2011 Adopted	Chg. 10 to 11	% Change
310	Taxes	19,065,956	17,508,020	18,619,762	18,773,520	153,758	0.8%
320	Licenses & Permits	610	590	500	500	0	0.0%
330	Intergovernmental	2,638,050	2,801,338	2,737,939	2,725,394	-12,545	-0.5%
340	Charges for Services	10,309	22,809	13,965	13,513	-452	-3.2%
360	Miscellaneous	2,003,213	1,238,411	853,031	1,123,366	270,335	31.7%
390	Other Financing Sources	824,210	976,760	872,897	830,000	-42,897	-4.9%
Total		24,542,347	22,547,928	23,098,094	23,466,293	368,199	1.6%
TOTAL REVENUES		24,542,347	22,547,928	23,098,094	23,466,293	368,199	1.6%

EXPENDITURES

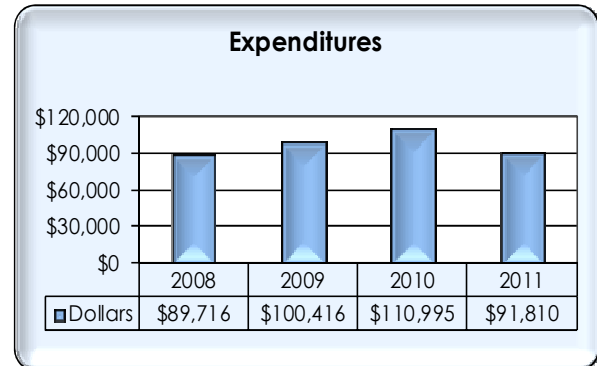
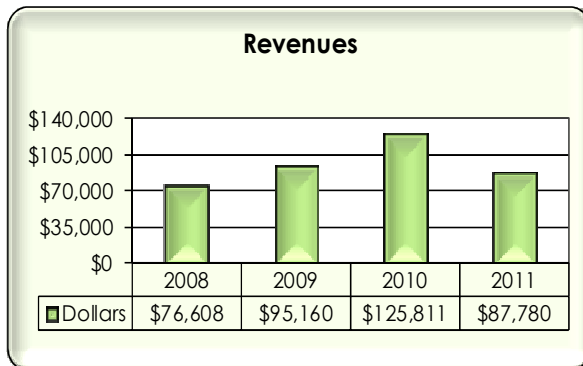
BARS #	Object Description	2008 Actual	2009 Actual	2010 Est. Actual	2011 Adopted	Chg. 10 to 11	% Change
519.95	00 Non Classified	8,673	878	195	0	-195	-100.0%
514.22	10 Salaries & Wages	424,500	428,659	436,479	429,178	-7,301	-1.7%
	20 Payroll Benefits	144,820	145,981	132,121	141,240	9,119	6.9%
	30 Supplies	8,444	18,902	16,920	17,000	80	0.5%
	40 Other Services/Charges	60,258	52,419	26,182	26,400	218	0.8%
	90 Interfund Payments	126,289	141,326	118,681	119,136	455	0.4%
Total		772,984	788,165	730,578	732,954	2,376	0.3%
TOTAL EXPENDITURES		772,984	788,165	730,578	732,954	2,376	0.3%

Treasurer's O&M Special Revenue Fund, No. 108

The Treasurer's O&M Fund was created to help pay for the collection of delinquent real and personal property taxes and special assessments. The Fund can pay for anything directly related to the collection of delinquent taxes and assessments. The costs involved in foreclosing or distraining are legally recoverable as part of the minimum bid on the sale of real and personal property due to tax delinquency. These costs and fees comprise the revenue for this fund.

Staffing Summary

	2008 FTE	2009 FTE	2010 FTE	2011 FTE
Deputy Treasurer-Foreclosures & Collections	1	1	1	1
TOTAL	1	1	1	1



REVENUES

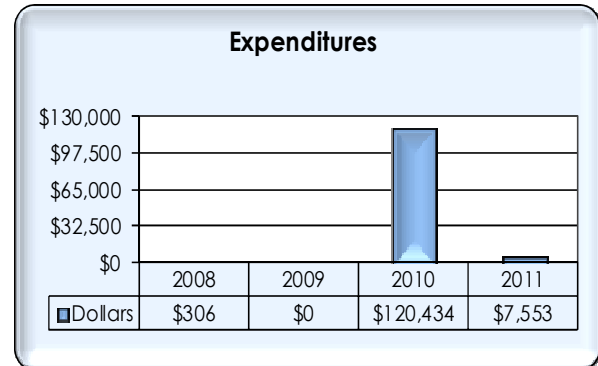
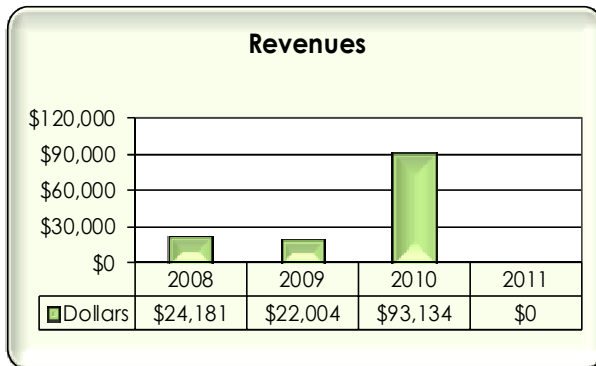
BARS #	GENERAL Description	2008 Actual	2009 Actual	2010 Est. Actual	2011 Adopted	Chg. 10 to 11	% Change
	Beginning Fund Balance	90,323	77,215	71,960	86,776	14,816	20.6%
340	Charges for Services	67,863	88,927	119,571	83,130	-36,441	-30.5%
360	Miscellaneous	8,745	6,234	6,240	4,650	-1,590	-25.5%
	Total	76,608	95,160	125,811	87,780	-38,031	-30.2%
	TOTAL REVENUES & BEGINNING FUND BALANCE	166,931	172,375	197,771	174,556	-23,215	-11.7%

EXPENDITURES

GENERAL			2008	2009	2010	2011	Chg.	%
BARS #	Object	Description	Actual	Actual	Est. Actual	Adopted	10 to 11	Change
Ending Fund Balance			77,215	71,960	86,776	82,746	-4,030	-4.6%
514.22	10	Salaries & Wages	43,057	45,241	46,016	47,239	1,223	2.7%
	11-12	Extra Help/Overtime	2,111	1,707	2,268	1,500	-768	-33.9%
	20	Payroll Benefits	16,924	17,480	15,890	16,871	981	6.2%
	30	Supplies	19	568	1,079	550	-529	-49.0%
	40	Other Services & Charges	15,596	22,180	32,970	21,850	-11,120	-33.7%
	50	Intergovernmental	20	0	0	0	0	0.0%
	90	Interfund Payments	11,988	13,240	12,772	3,800	-8,972	-70.2%
Total			89,716	100,416	110,995	91,810	-19,185	-17.3%
TOTAL EXPENDITURES & ENDING FUND BALANCE			166,931	172,375	197,771	174,556	-23,215	-11.7%

E Reet-Technology Special Revenue Fund, No. 132

The E-Reet Technology Fund was created in August of 2005. The County Treasurer collects an additional five dollar fee on all taxable transactions required by chapter 82.45 RCW. The funds from the fee are to be used exclusively for the development, implementation, and maintenance of an electronic processing and reporting system for real estate excise tax affidavits.



REVENUES

BARS #	GENERAL Description	2008 Actual	2009 Actual	2010 Est. Actual	2011 Adopted	Chg. 10 to 11	% Change
	Beginning Fund Balance	83,461	107,335	129,339	102,039	-27,300	-21.1%
330	Intergovernmental	24,181	22,004	93,134	0	-93,134	-100.0%
	Total	24,181	22,004	93,134	0	-93,134	-100.0%
	TOTAL REVENUES & BEGINNING FUND BALANCE	107,641	129,339	222,473	102,039	-120,434	-54.1%

EXPENDITURES

BARS #	Object	GENERAL Description	2008 Actual	2009 Actual	2010 Est. Actual	2011 Adopted	Chg. 10 to 11	% Change
		Ending Fund Balance	107,335	129,339	102,039	94,486	-7,553	-7.4%
514.22	30	Supplies	0	0	38,931	0	-38,931	-100.0%
	40	Other Services & Charges	306	0	33,074	7,553	-25,521	-77.2%
	60	Capital	0	0	14,391	0	-14,391	-100.0%
	90	Interfund Payments	0	0	34,037	0	-34,037	-100.0%
		Total	306	0	120,434	7,553	-112,881	-93.7%
		TOTAL EXPENDITURES & ENDING FUND BALANCE	107,641	129,339	222,473	102,039	-120,434	-54.1%