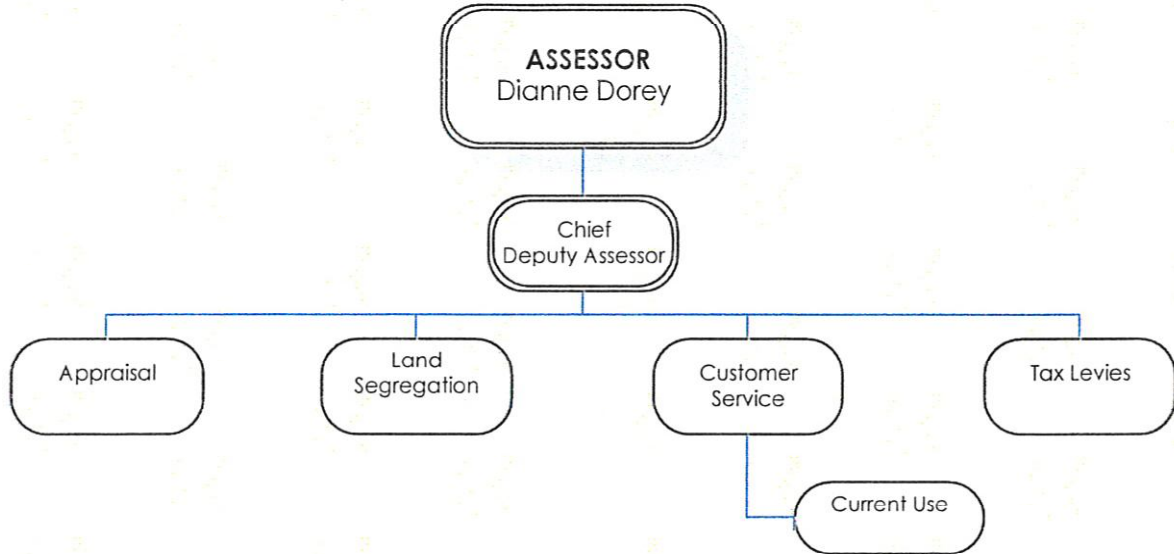


Assessor

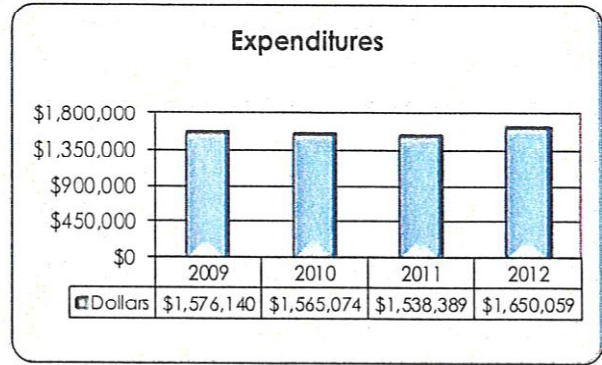
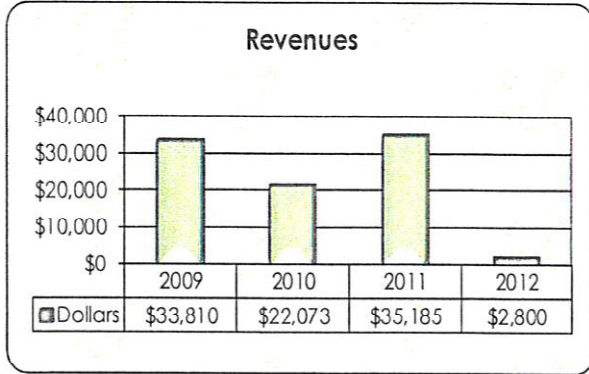
General Fund, Dept. No. 104



The County Assessor is responsible for the administration of State Laws relating to assessment of real and personal property. The Assessor determines fair market value of taxable property. The Assessor's records pertaining to property ownership and value, legal descriptions and mapping are made available to the public.

Staffing Summary

	2009 FTE	2010 FTE	2011 FTE	2012 FTE
Assessor	1	1	1	1
Chief Appraiser	1	1	1	1
Chief Deputy Assessor	1	1	1	1
Appraiser I	2	1	0	0
Appraiser II	4	5	5.52	5.52
Appraiser III	2	2	1.52	1
Appraiser IV	1	1	1	1
Deputy Assessor-Levy & Audit	1	1	1	1
Assessment Programs Supervisor	1	1	1	1
Mapping Specialist	3	3	3	3
Deputy Assessor Exemptions Clerk	1	1	.75	.75
Deputy Assessor-Cust Service	1.9	1.9	1.75	1.75
TOTAL	19.9	19.9	18.54	18.02



REVENUES

BARS #	GENERAL Description	2009 Actual	2010 Actual	2011 Est. Actual	2012 Adopted	Chg. 11 to 12	% Change
330	Intergovernmental	0	0	33,746	0	-33,746	-100.0%
340	Charges for Services	2,219	2,073	1,435	1,500	65	4.5%
360	Miscellaneous	31,591	20,000	4	1,300	1,296	31075.1%
Total		33,810	22,073	35,185	2,800	-32,385	-92.0%
TOTAL REVENUES		33,810	22,073	35,185	2,800	-32,385	-92.0%

EXPENDITURES

BARS #	Object Description	2009 Actual	2010 Actual	2011 Est. Actual	2012 Adopted	Chg. 11 to 12	% Change
514.24	10 Salaries & Wages	925,706	932,951	830,396	890,180	59,784	7.2%
	11-12 Extra Help/Overtime	5,246	0	26,890	0	-26,890	-100.0%
	20 Payroll Benefits	338,279	333,450	311,207	346,501	35,294	11.3%
	30 Supplies	8,432	5,353	5,213	10,000	4,787	91.8%
	40 Other Services/Charges	-275	14,736	22,288	63,540	41,252	185.1%
	50 Intergovernmental	0	0	10	0	-10	-100.0%
	90 Interfund Payments	298,751	278,583	342,385	339,838	-2,547	-0.7%
Total		1,576,140	1,565,074	1,538,389	1,650,059	111,670	7.3%