



LEWIS COUNTY HAZARD MITIGATION PLAN - UPDATE

Kickoff Meeting
March 24, 2022



Introductions

KIRK HOLMES

Perteet Inc.

- Director of Emergency Services
- Member of the Washington Emergency Management Council
- Former city and county public works director
- Responded to nine presidential disaster declarations and six locally declared emergencies

ROB FLANER

Tetra Tech, Inc.

- Hazard Mitigation Program Manager
- Former FEMA Contractor
- Facilitated over 40 successful mitigation planning efforts since 2003
- Performed risk assessment for current Chehalis River Basin CFHMP

CHRISTINA WOLLMAN

Perteet Inc.

- Project Manager
- Lead Planner
- Former county public works employee
- Certified Floodplain Manager
- Advisory committee member for integrations of HMPs and Comprehensive Plans



Who is here today?





Today's Discussion

- Plan Update Purpose
- Planning Process
- Planning Partnership
- Steering Committee
- Next Steps
- Questions/Discussion



Planning Purpose



Why are we here?

- Your current HMP is expired.
- You are not eligible for FEMA BRIC, HMGP, or FMA grants.



Packwood – January 10, 2007



Why are you here?

- Lewis County residents and jurisdictions are at risk from natural hazards
- You have been identified as a stakeholder in hazard mitigation within Lewis County
- Stakeholders
 - You meet the definition of Local Government
 - You can benefit by being a planning partner
 - Your facilities can benefit
 - Your constituents can benefit





Local Government, defined in DMA

- Any county, municipality, city, town, township, public authority, school district, special district, intrastate district, council of governments (regardless of whether the council of governments is incorporated as a nonprofit corporation under State law), regional or interstate government entity, or agency or instrumentality of a local government; any Indian tribe or authorized tribal organization, or Alaska Native village or organization; and any rural community, unincorporated town or village, or other public entity.



What is Mitigation?

Five phases of emergency management



Mitigation is “*sustained action taken to reduce or eliminate long-term risk to life and property.*”





Examples of Mitigation Strategies

- Seismic retrofit of buildings and bridges
- Redundancy of water systems and fuel systems
- Tree planting to reduce heat in urban cores
- Education programs to be better informed of risks
- Policies – building codes and zoning
- Generators to ensure facilities remain functional
- Incentives – grants or financial assistance for risk reduction at business and household level



What is the Disaster Mitigation Act (DMA)?

Federal legislation that establishes a pre-disaster hazard mitigation program (BRIC) and the national post-disaster Hazard Mitigation Grant Program (HMGP)

=

Federal \$\$\$ for pre-disaster and post-disaster hazard mitigation projects in Lewis County



Curtis, WA – December 2007





Provisions of the DMA

- Encourages and rewards local and state pre-disaster planning (\$\$\$ for projects)
- Integrates state and local planning
- Results in faster and more efficient allocation of funding and more effective risk reduction projects
- Specifies required plan components:
 - Risk assessment
 - Public outreach and participation
 - Process for update
 - Formal review State and FEMA review
 - Documentation of acceptance by the community



Benefits of Hazard Mitigation Plans

- Establish eligibility for grant funds (\$\$\$ for projects)
- Improve understanding of risks and vulnerabilities
- Reduce negative impact of natural hazards – actions save lives, reduce displacement, and speed recovery
- Encourage sustainable actions – builds strong, resilient, and self-sufficient communities
- Foster collaboration between local jurisdictions and residents





Response to the DMA in Lewis County

- Initial HMP was developed in 2005 and then updated in 2010 and 2015
- All plans were multi-jurisdictional
 - Lewis County
 - All cities and towns
 - Fire Districts
 - School Districts
 - Ports, tribes, health districts
- The plans expire after five years



Centralia – January 2022



Update Required

- 44 CFR Section 201.6 requires that approved local HMP's must be updated at least every 5 years to remain eligible under the DMA
- Effective plans are those that remain relevant, which requires review and enhancement regularly
- Maintaining an established HMP creates opportunities to integrate with other planning processes and planning efforts with adjacent jurisdictions





Standards for Approval

- FEMA has established required elements for updates to HMP's
- These requirements are comprehensive and include:
 - Re-engaging the public
 - Review/revise risk assessment
 - Review/revise goals and objectives
 - Review/revise action plan (strategies)



Property of Museum of History & Industry, Seattle
Chehalis Methodist Church, April 1949



Community Rating System (CRS)

- City of Chehalis and Centralia and Lewis County participate in (CRS)
- CRS has specific requirements for the planning process
- Our planning process incorporates the CRS process



Centralia, January 2022





Planning Process



The 2022 Plan Update

- Project is being funded by a grant from WA Emergency Management Division and FEMA
- Lewis County has procured a technical support contractor (Perteet and Tetra Tech)
- Lewis County Emergency Management is leading the planning process



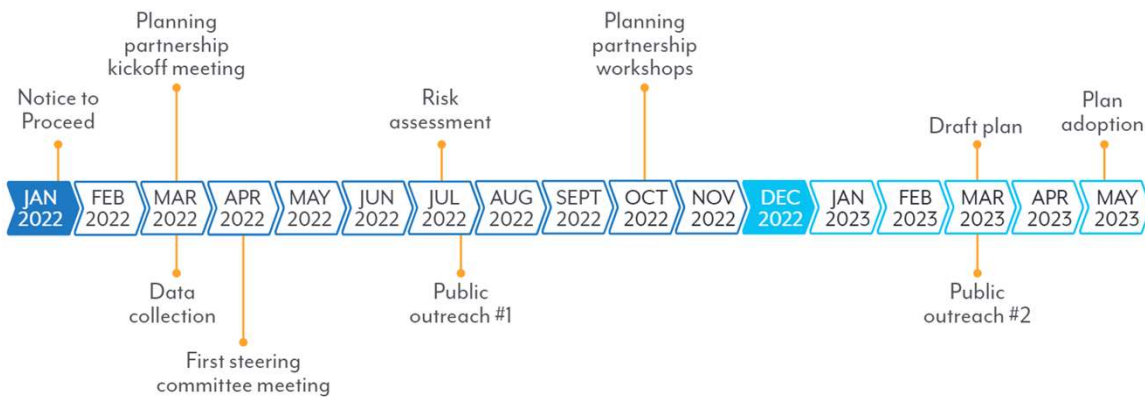


The Workplan

- Phase 1 Organize Resources
- Phase 2 Risk Assessment
- Phase 3 Public Involvement Strategy
- Phase 4 Identify Goals, Objectives, and Actions
- Phase 5 Plan Maintenance Strategy
- Phase 6 Assemble the Plan
- Phase 7 Plan Review and Adoption
- Phase 8 Plan Implementation



Timeline





Planning Partnership



Planning Partner Expectations

- Letter of intent to participate
- Participate in process
- Attend all “mandatory” meetings
- Support Steering Committee
- Complete Jurisdictional Annex template
- Develop mitigation strategy and action plan



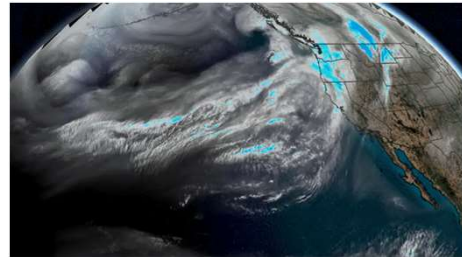
Centralia, 2007





Estimated Level of Effort

- For those partners not sitting on the Steering Committee:
 - Generally, about 36 hours of effort over a year
 - Participation in jurisdictional annex workshops
 - Completion of the jurisdictional annex template (phased approach)
 - Participation in Public Outreach Strategy
 - Plan adoption
 - Critical facility update may require an additional 8-10 hours over the course of one month



Atmospheric River - 2020



Cost

- The County received grant funding for the project from FEMA.



Randle - December 2015





Jurisdictional Annex Data Capture Form

- Form used to assure DMA compliance for each planning partner
- The basis for each chapter in Volume 2 of the plan
- Will be deployed in 3 phases
- There are 4 different forms:
 - Municipality-Initial effort
 - Special Purpose District-Initial
 - Municipality-Update
 - Special Purpose District-Update
- There will be a mandatory workshop to go over completion
- Will be supported by a “Toolkit”

CHAPTER X.
(INSERT JURISDICTION NAME) ANNEX

X.1 HAZARD MITIGATION PLAN POINT OF CONTACT

Primary Point of Contact:		Alternate Point of Contact:	
Name: <u> </u>	Title: <u> </u>	Name: <u> </u>	Title: <u> </u>
Street Address: <u> </u>	Street Address: <u> </u>	Street Address: <u> </u>	Street Address: <u> </u>
City: <u> </u>	City: <u> </u>	City: <u> </u>	City: <u> </u>
Telephone: <u> </u>	Telephone: <u> </u>	Telephone: <u> </u>	Telephone: <u> </u>
e-mail Address: <u> </u>	e-mail Address: <u> </u>	e-mail Address: <u> </u>	e-mail Address: <u> </u>

X.2 JURISDICTION PROFILE

The following is a summary of key information about the jurisdiction and its history:

- Date of Incorporation—
- Current Population—
- Population Growth—
- Location and Description—
- Brief History—
- Charter—
- Governing Body Form—
- Development Trends—

X.3 JURISDICTION-SPECIFIC NATURAL HAZARD EVENT HISTORY

Table X.3 lists all past occurrences of natural hazards within the jurisdiction. Repetitive loss records are as follows:

- Number of FEMA Identified Repetitive Flood Loss Properties:
- Number of Repetitive Flood Loss Properties that have been mitigated:

X.4 HAZARD RISK RANKING

Table X.4 presents the ranking of the hazards of concern.

X.5 CAPABILITY ASSESSMENT

The assessment of the jurisdiction's legal and regulatory capabilities is presented in Table X.5. The assessment of the jurisdiction's administrative and financial capabilities is presented in Table X.6. The assessment of the jurisdiction's fiscal capabilities is presented in Table X.5. Classifications under various emergency mitigation programs are presented in Table X.6.

X-1



Steering Committee



Steering Committee Members

- For efficiency purposes, this will not include every planning partner, but rather a downsized number who will represent everyone involved
- Multidisciplinary representation – very important
 - Planning partners representative(s)
 - Citizens
 - Stakeholders (Business, academia, government)
 - Emergency Management
- Will meet regularly during plan development



The Steering Committee

Will operate under a set of ground rules

Will participate in the public involvement strategy

Will act as spokespersons for the process

Will meet 6-8 times for a minimum of two hours per meeting

Will oversee plan development



Next Steps



Next Steps

- Confirm planning partnership
 - **Please submit LOI's to Ross by 4/15/22**
 - LOI does **not** need a political action. However, if your jurisdiction requires a political action – just let us know that you are participating, but that the LOI may take longer
- Begin Steering Committee process
- Mine data for risk assessment
- Deploy phase one of jurisdictional annex process



Lewis County – January 2022





Questions?

